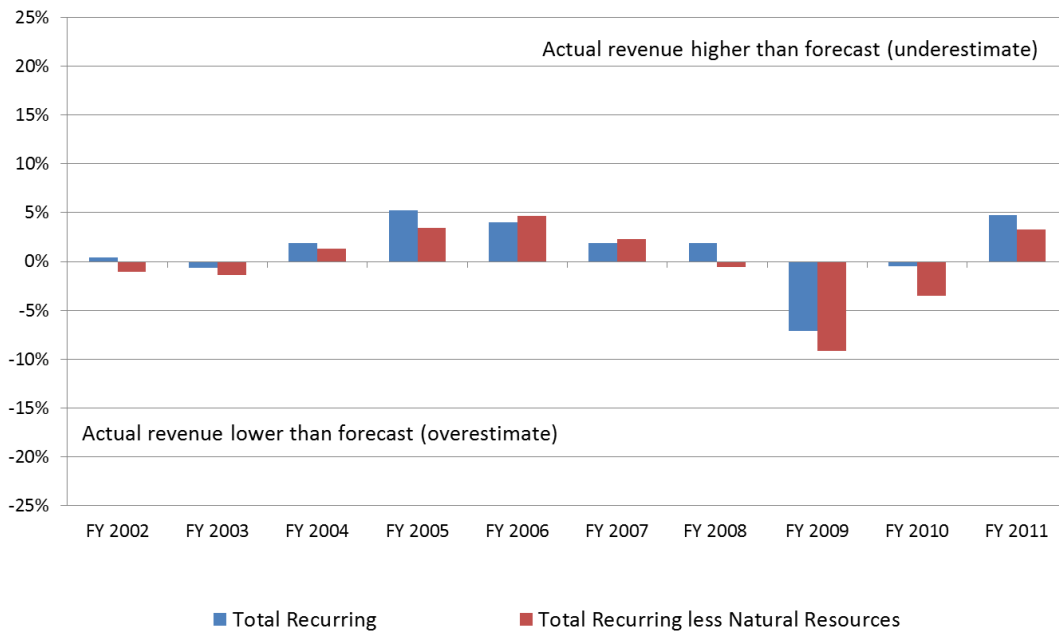
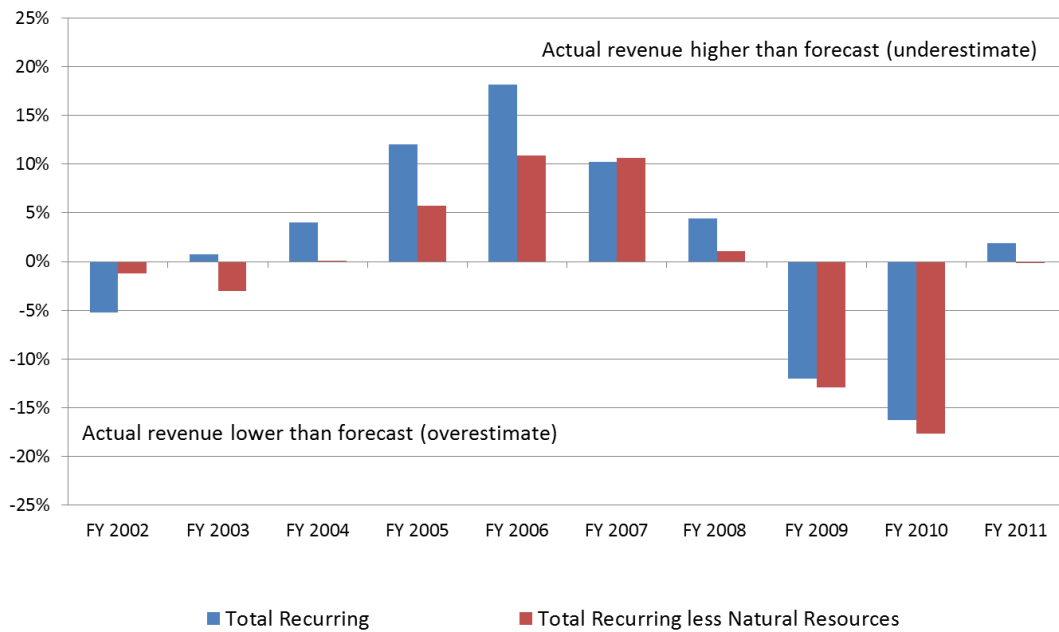


Consensus Revenue Group 6-Month Estimating Error for Recurring Revenues and Natural Resource Revenues



Consensus Revenue Group 18-Month Estimating Error for Recurring Revenues and Natural Resource Revenues



Notes: Negative error indicates actual revenue fell short of estimate. Positive error indicates actual revenue exceeded estimate.

- 18-month error reflects the revenue estimate made in January before the beginning of each fiscal year, adjusted for legislative impacts. It is the estimate on which each budget is based.
- 6-month error reflects the revenue estimate made in January during each fiscal year, adjusted for legislative impacts.