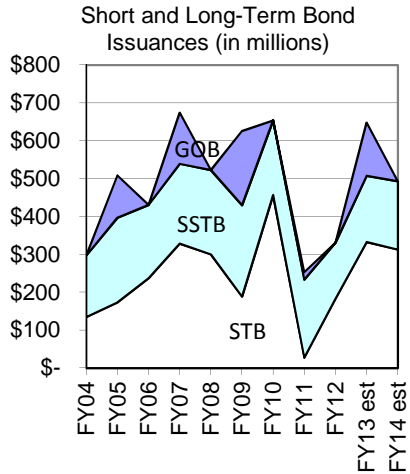


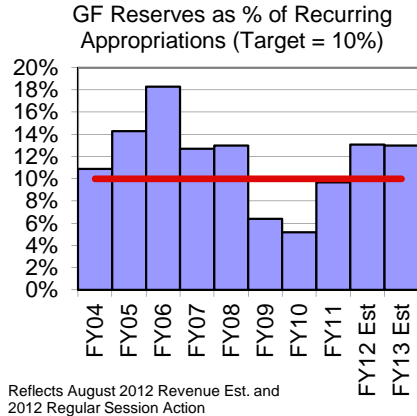
# STATE BOARD OF FINANCE DASHBOARD REPORT: January 2013

## BONDS



| NM GOB Rating  |                            |
|--|----------------------------|
| Actual (Moody's/SP)  | Target (Moody's/SP)        |
| Aaa/AA+  | Aaa/AAA                    |
| Outlook:   | Negative/Stable            |
| Average TIC of Outstanding Debt: 2.38%   |                            |
| Average Maturity of all Outstanding Bonds (GOB, STB, SSTB): <b>3.29 Years</b> (1/1/13) |                            |
| Bond Proceeds  |                            |
| Unspent Bond Proceeds  | \$844.69 million (1/14/13) |
| Proceeds by Age  |                            |
| Over One Year:   | \$582.30 million           |
| Over Five Years:   | \$43.41 million            |
| Tax-Exempt BPIP Market Value (11/30/12)  | \$320 million              |
| Weighted Life  | 1.7 years                  |
| Taxable BPIP Market Value (11/30/12)   | \$541 million              |
| Weighted Life  | 1.8 years                  |
| Key Debt Ratios  |                            |
| Debt Per Capita  | \$1,233                    |
| Debt as Percent of Personal Income   | 3.62%                      |

## GENERAL FUND



Reflects August 2012 Revenue Est. and 2012 Regular Session Action

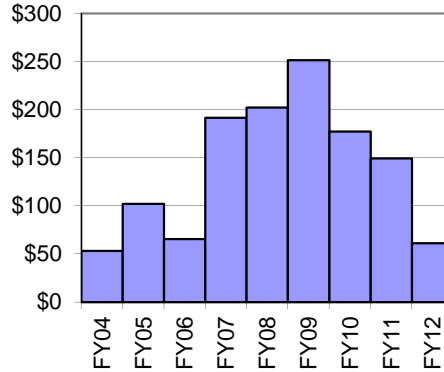
| STO General Fund (11/30/12)     |               |
|---------------------------------|---------------|
| Market Value                    | \$1.8 Billion |
| Weighted Life- Core             | 2.8 years     |
| Investment Policy Last Updated: | Nov. 2011     |

## CAPITAL PROJECTS

### 5-Year Plans Submitted to HED

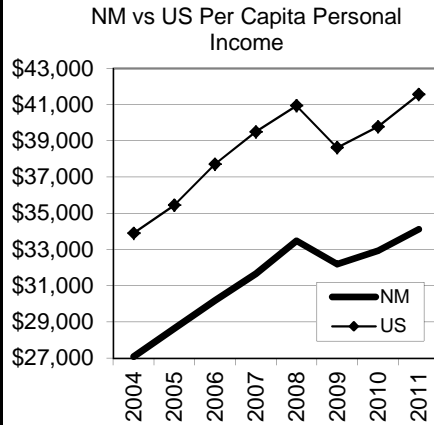
| Actual | Target |
|--------|--------|
| 100%   | 100%   |

### Higher Ed Capital Projects Approved by BOF (\$ in millions)



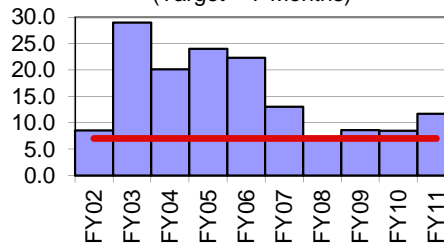
## NEW MEXICO ECONOMY

|                  |                 |
|------------------|-----------------|
| NM Unempl. Rate: | 6.2% (Nov 2012) |
| US Unempl. Rate: | 7.8% (Dec 2012) |



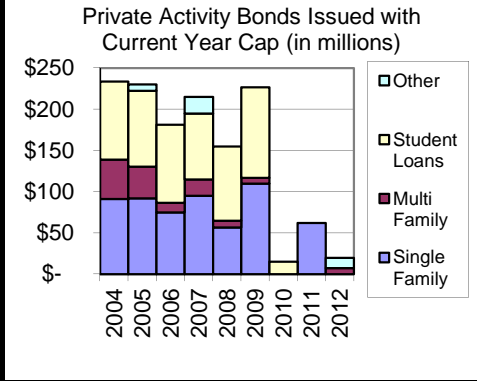
## FINANCIAL MANAGEMENT

### Months to Issue CAFR after FY End (Target = 7 Months)



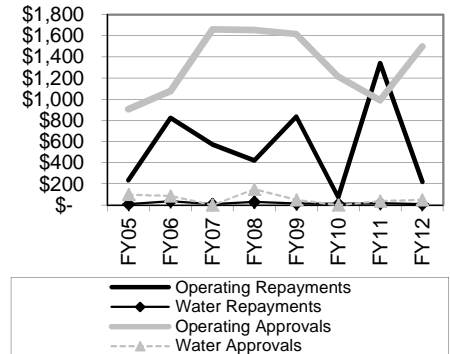
| Collateral                     |            |
|--------------------------------|------------|
| NM Collateral Required         | 50 - 102%  |
| GFOA Recommendation            | 102%       |
| Debt Management                |            |
| Last Debt Affordability Study: | Oct. 2012  |
| Last Debt Policy Updated:      | March 2012 |

## PRIVATE ACTIVITY BONDS



## EMERGENCY FUNDS

### Emergency Loan Approvals and Repayments (in thousands)



### Emergency Loans by Type of Public Entity

