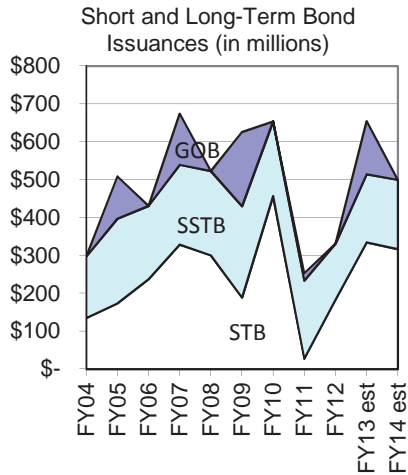


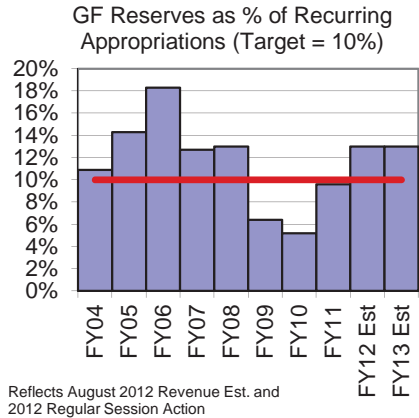
STATE BOARD OF FINANCE DASHBOARD REPORT: October 2012

BONDS



NM GOB Rating	
Actual (Moody's/SP)	Target (Moody's/SP)
Aaa/AA+	Aaa/AAA
Outlook:	Negative/Stable
Average TIC of Outstanding Debt: 2.38%	
Average Maturity of all Outstanding Bonds (GOB, STB, SSB): 3.54 Years (10/1/12)	
Bond Proceeds	
Unspent Bond Proceeds	\$845.11 million (9/27/12)
Proceeds by Age	
Over One Year:	\$534.97 million
Over Five Years:	\$39.53 million
Tax-Exempt BPIP	
Market Value	\$353 million (8/31/12)
Weighted Life	1.7 years
Taxable BPIP	
Market Value	\$590 million (8/31/12)
Weighted Life	1.9 years
Key Debt Ratios	
Debt Per Capita	\$1,256
Debt as Percent of Personal Income	3.68%

GENERAL FUND



Reflects August 2012 Revenue Est. and 2012 Regular Session Action

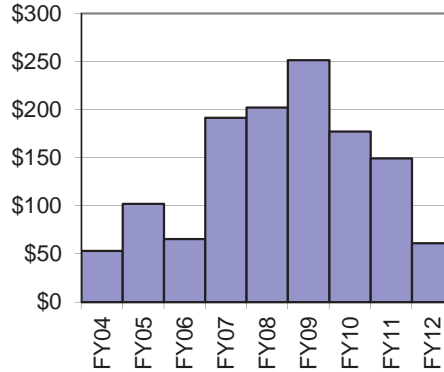
STO General Fund (8/31/12)	
Market Value	\$1.8 Billion
Weighted Life- Core	2.6 years
Investment Policy Last Updated:	Nov. 2011

CAPITAL PROJECTS

5-Year Plans Submitted to HED

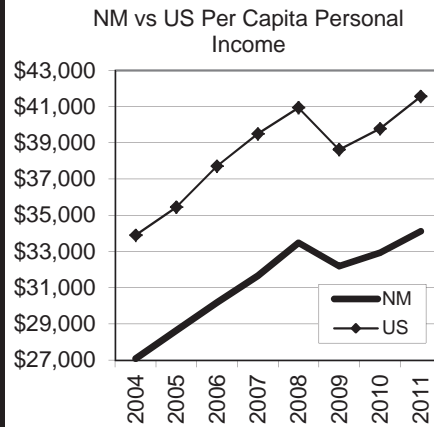
Actual	Target
100%	100%

Higher Ed Capital Projects Approved by BOF (\$ in millions)



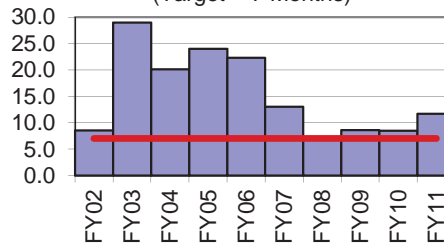
NEW MEXICO ECONOMY

NM Unempl. Rate:	6.5% (August 2012)
US Unempl. Rate:	8.1% (August 2012)



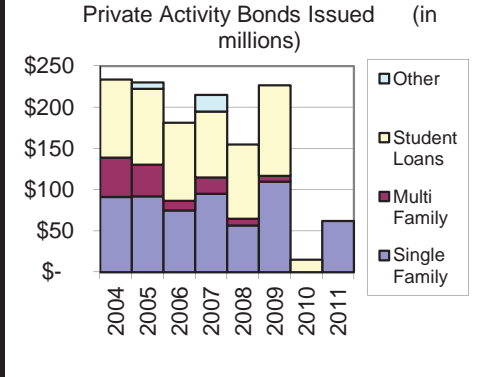
FINANCIAL MANAGEMENT

Months to Issue CAFR after FY End (Target = 7 Months)



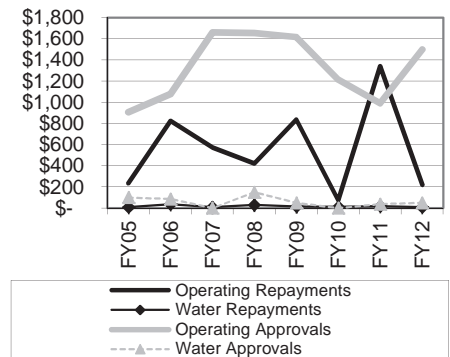
Collateral	
NM Collateral Required	50 - 102%
GFOA Recommendation	102%
Debt Management	
Last Debt Affordability Study:	Oct. 2012
Last Debt Policy Updated:	March 2012

PRIVATE ACTIVITY BONDS



EMERGENCY FUNDS

Emergency Loan Approvals and Repayments (in thousands)



Emergency Loans by Type of Public Entity

